

GLSS GETECH LASER SINGULATION SYSTEM

TOTAL SOLUTION FOR ROUTER BUSINESS

As a world leader in PCB Depaneling systems, **GETECH** presents **GLSS**. A standalone machine designed for high-speed laser depaneling and high volume production of rigid and semi-flexible PCB panels.

Table Size: **350mm x 350mm**



FEATURES

DUAL TABLES

SHORT PULSE GREEN LASER

HIGH ACCURACY & QUALITY CUT

PARALLEL PROCESSING (DEPANELING AND HANDLING)

VERSATILE VISUAL PROGRAMMING SYSTEM (MOVE, TEACH, CUT)

SAFETY PROTECTION ENCLOSURE W/ INTERNAL PARTITION

MANUAL LOADING/UNLOADING

PROGRAMMABLE Z-HEIGHT

HIGH-RESOLUTION VISION CAMERA

CE CERTIFICATION (OPTION)



ISO 9001 : 2015 Cert. No.: 622220

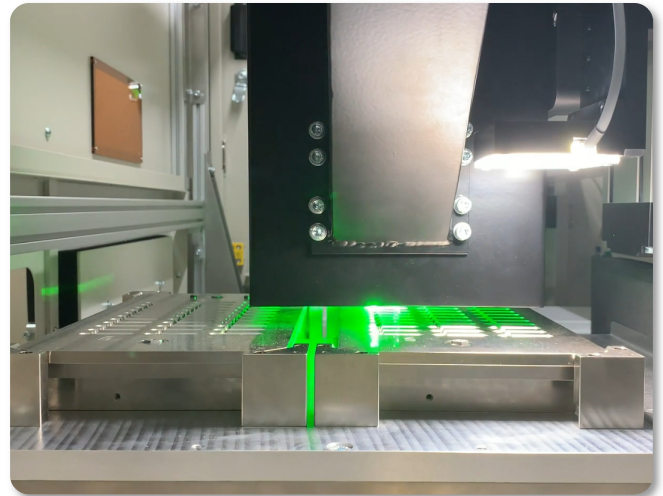
GLSS Getech Laser Singulation System

Local Agent:

The GLSS is a standalone Laser singulation machine specially designed to handle ultra-thin and flexible printed circuit board assemblies (PCBA) up to 0.8mm in thickness.

The GLSS operates with two worktables for simultaneous cutting and load/unload operations for maximum production effectiveness and flexibility. Parts handling is as simple as positioning on a flat vacuum platen or a simple alignment fixture, making the expenses usually associated with tooling less.

The GLSS employs a 532nm green laser source that delivers up to 30W at the workpiece. The green wavelength is well-suited to PCB materials enabling clean cuts.



SPECIFICATIONS

Manipulator	Configuration	: 4 Axes
	Manipulator Motors	: AC brushless servo motors
	Manipulator Repeatability	: ± 0.02 mm
	Resolution	: ± 0.01 mm
Workstation	Design	: Dual workstation with nest fixture or pin fixture
	Panel Positioning	: Located by tooling holes, edges of PCB or vacuum fixture
	Panel Loading/unloading	: Manual
	Table Size	: 350 mm x 350 mm
	Panel Thickness	: Up to 0.8 mm for FR4 (Design guidelines available)
Laser System	Laser	: DPSS Laser
	Nominal Power	: Up to 30W @ 40 kHz
	Laser Medium	: Nd: YVO ₄
	Wavelength	: 532 nm
	Cooling	: Water cooling
	Peak Power	: Up to 37.5 kW @ 40 kHz
	Repetition Rate	: 40 kHz to 150 kHz
	Pulse Width	: < 20 nS @ 40 kHz
Pulse Energy	: Up to 750 μ J @ 40kHz	
Fume Extractor Unit	Power	: 1100W Fume extraction unit
	Filtration	: 3 stage filtration with disposable filters
		: Hepa Class H14, 99.997% @ 0.3micron & Activated carbon
Vision system	Video camera	: High-resolution CCD video camera : PCB Fiducial capturing or PCB Edge positioning (Optional)
Programming	System Platform	: Windows® based Industrial PC
	On line	: Vision assisted point to point manual teaching
	Offline	: CAD and manual program generation capability
	Editing Function	: Dry run vision assisted / test run mode
	Options	: Barcode support (1D or 2D), Fiducial alignment
Safety Feature	It has E-Stop buttons, a Laser safety shutter, Servo overload detection, Class 1 Laser safe work area, and laser safety viewing windows.	
Dimensions & Utilities	Machine size (W x D x H)	: 1630mm x 1580mm x 1850mm
	Weight	: Approx. 870Kg
	Power Supply	: 3+N+E, 380~415V, 50 Hz (Options available)