



ALP Automatic Labeling Machine

Getech Automatic Labeling Machine is a high speed inline label placer of pre printed label from an automatic label feeder to PCB.

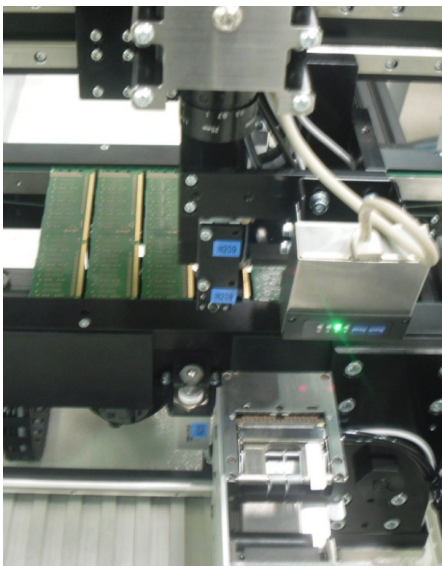
The ALP utilizes X-Y linear axes for the movement of the end effector which houses the vacuum pick-up head.

Pre-printed labels are directly fed by an automatic label feeder.

PCB boards are received on a two-stage width adjustable variable speed AC motor conveyor.

FEATURES:

- Extremely High placement speed
- Label placement accuracy of 0.1mm complete with U-axis rotation
- Optional features of barcode reader and multiple label feeders



SPECIFICATIONS

Placement capability

Placement speed	: 1000 mm/sec
Repeatability	: +/- 0.1 mm
Placement Accuracy	: 200 mm/sec max

Manipulator

Configuration	: U, X & Y
Manipulator Motors	:
X and Y Axis	– Standard Servo Motor
U Axis	- Standard motor (360 degree rotation)
Maximum Speed	: 1.0 m/s
Manipulator Repeatability	: ±0.1mm
Manipulator Accuracy	: ±0.015 mm



Workstation

- Board Positioning : Pneumatic Stopper
- Panel Location : Located by tooling holes or edges of PCB
- Panel Size (mm) : Max: 500 mm x 500 mm (1 stage)
320 mm x 500 mm (2 stage)
- Panel Thickness : Min: 90 mm x 90 mm
- Panel Thickness : 0.5 mm – 4.0 mm

Conveyor

- Edge Clearance : 4 mm
- Max Payload : 1.5 Kg.

Label Feeder

- Feeder Capacity : 4 pcs.
- Label Size (Max.) : 24 mm x 40 mm
- Label Size (Min.) : 5 mm x 7 mm

Vision System

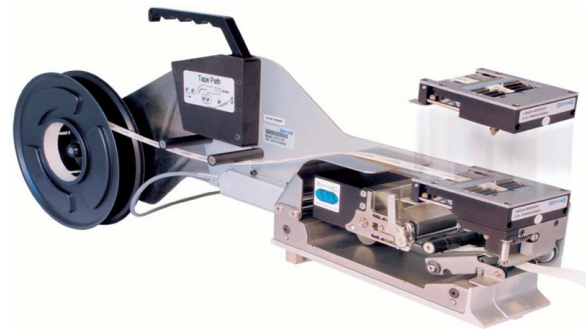
- Video camera : High resolution CCD video camera,
PCB Fiducial capturing (Optional)

Bar Code Scanner

- Supported Interfaces: RS232C and USB1.1
- Barcode Type : 1D, 2D, Datamatrix, QR

MACHINE DIMENSIONS & UTILITIES

- Machine size : 0.8M x 1.20M x 1.65M
- Weight : 650kg
- Power Supply : (options available)



Local Agent: